

Installation and user guide for E53 Apk Calibration.

This user manual is to guide the personnel of Service Center to operate the Apk Calibration for E53

Calibration apk is needed to perform calibration of hardware components including Proximity Sensor, Light sensor and Accelerometer on E53 devices.

This manual will describe the operation steps of calibration in sequence of Proximity Sensor, Light sensor and Accelerometer.

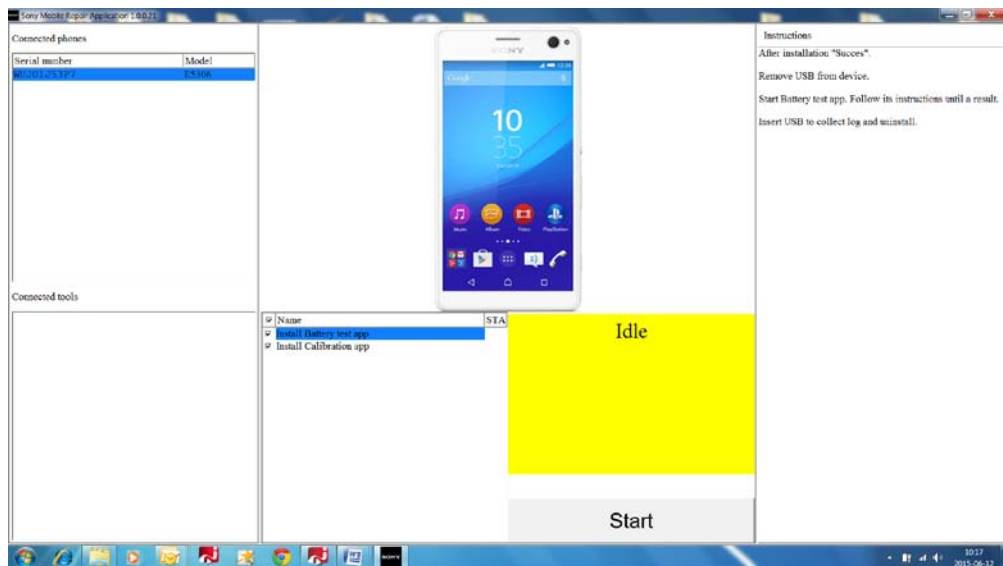
Contents

1	Operations.....	3
2	Install APK.....	3
3	Proximity Sensor	5
4	Light Sensor	12
5	Accelerometer	15
6	Uninstall APK	17
7	Disable debug mode.....	18

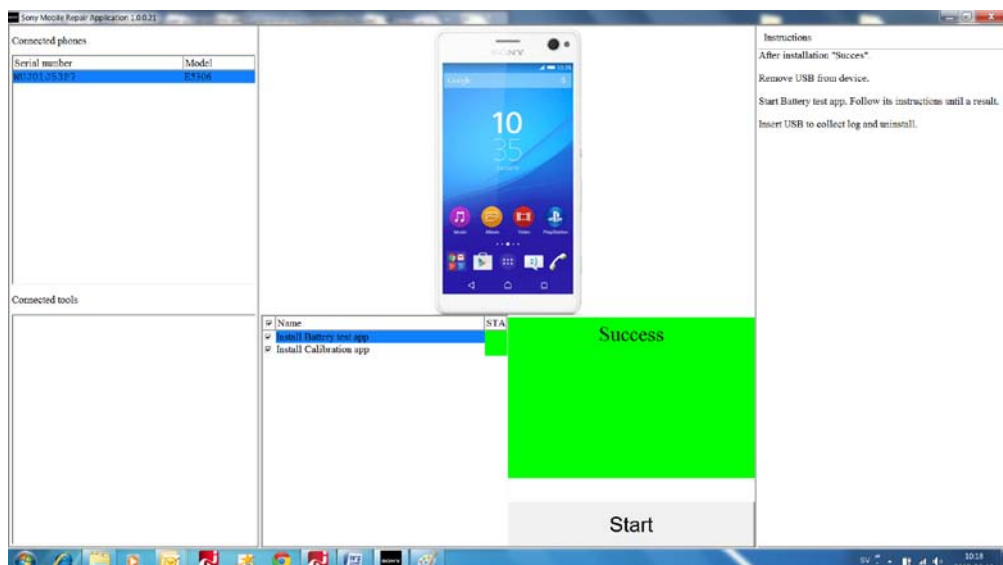
1 Operations

2 Install APK

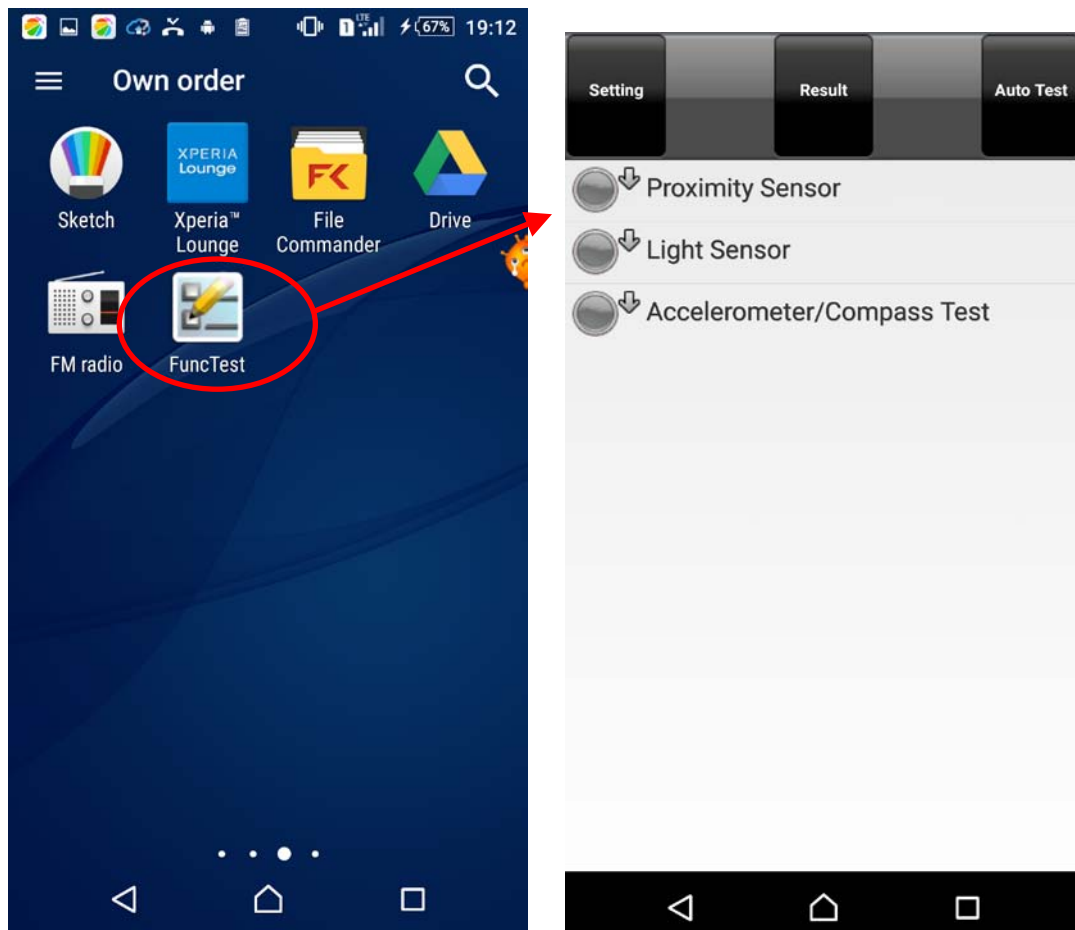
Enable USB debug mode in phone and connect to Sony Mobile Repair Application



Press **Start** to install Calibration app.
When Success installation, then remove USB from device.



Press FuncTest to enter Calibration menu.

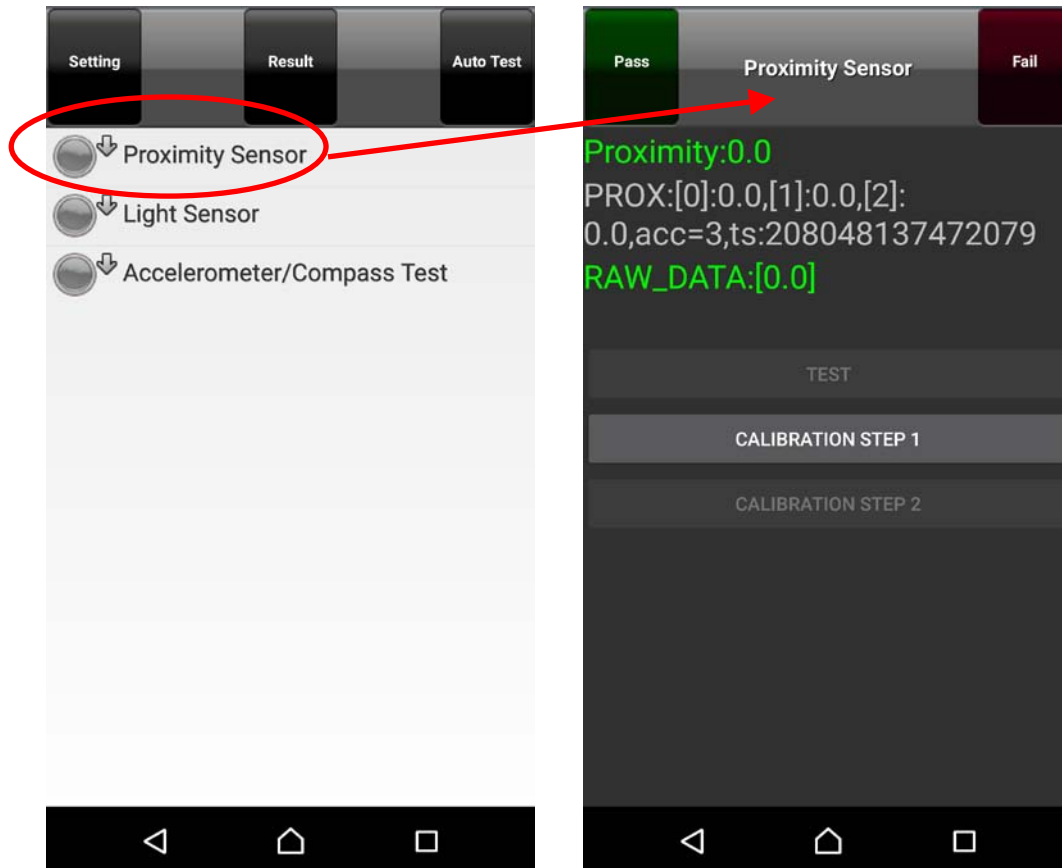


3 Proximity Sensor

- (1) Prepare a Proximity fixture C23/D2x/E2x/E53 to cover the Proximity sensor by the distance of 3 cm above the device. (see below pictures for illustration)



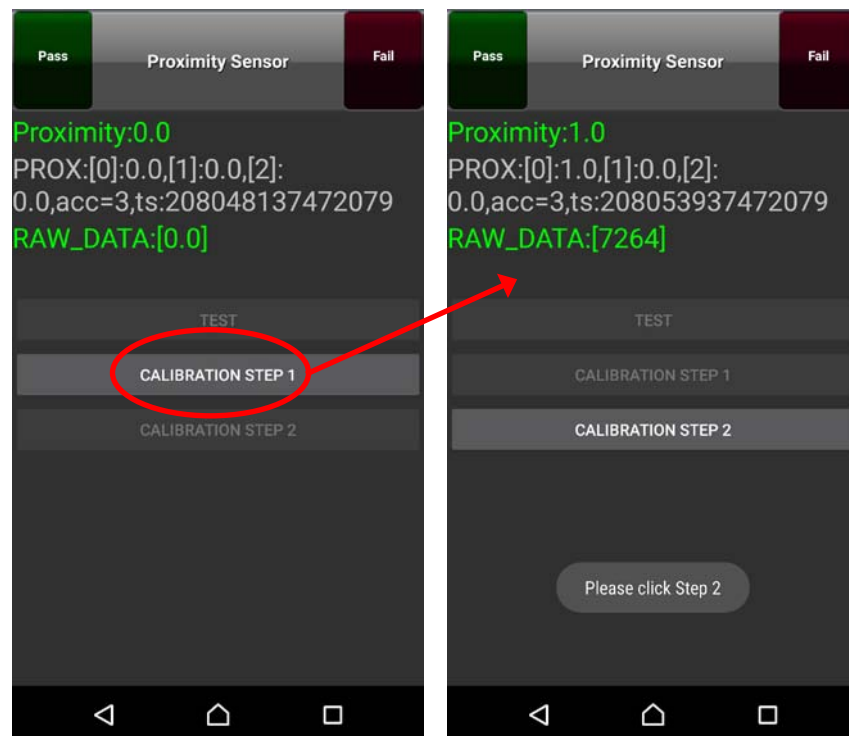
- (2) Select "Proximity Sensor" item in calibration main menu to enter the page of Proximity Sensor.



(3) Place phone in Proximity fixture.



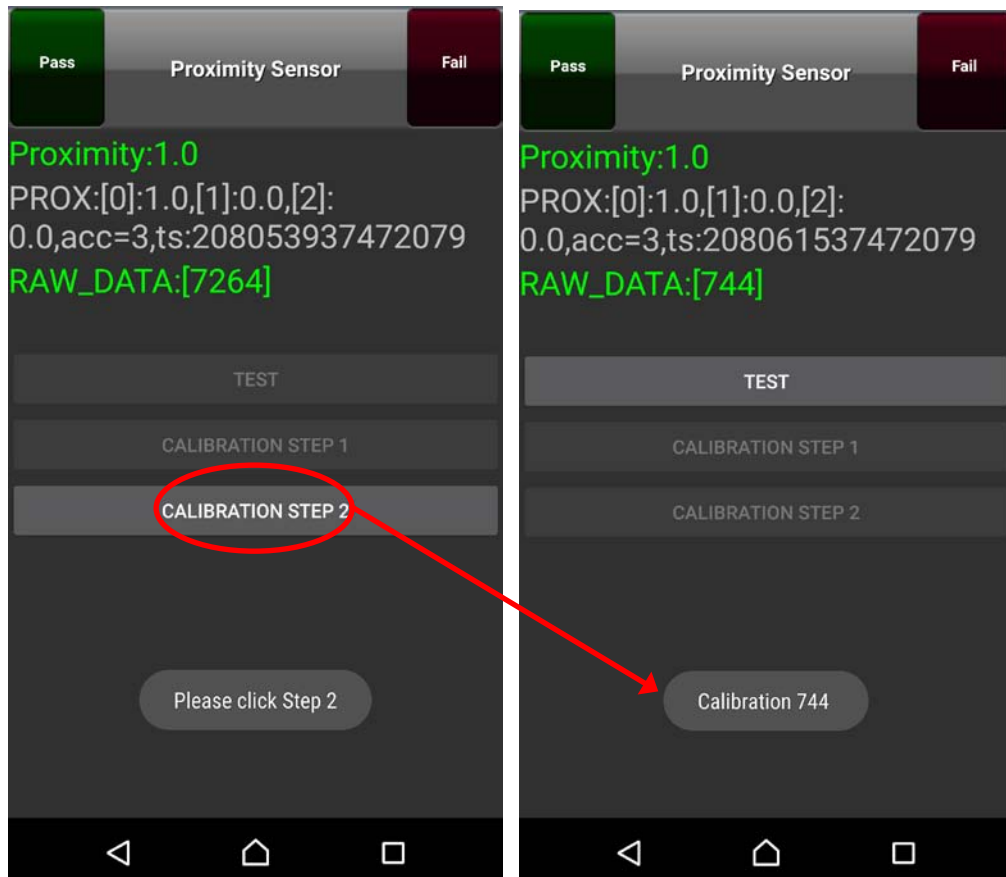
(4) Press button “Calibration STEP1” and the calibration process will start. Please keep unit in proximity fixture during the calibration procedure.



(6) As calibration completed, the result screen will be presented.

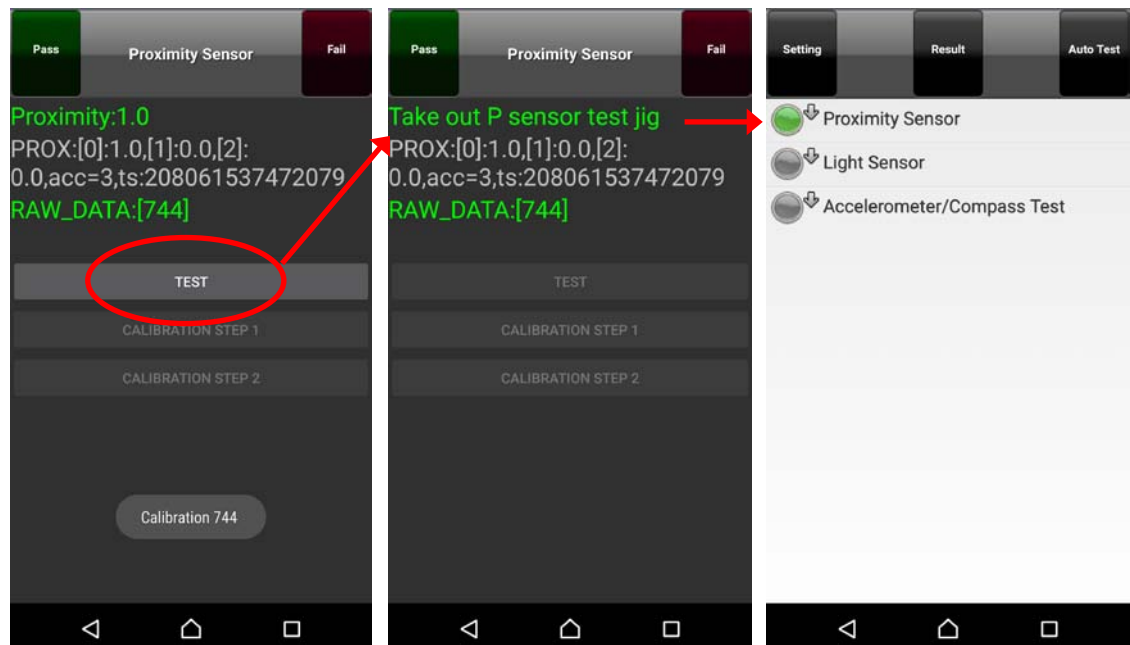
(7) Please move the device outside proximity fixture.





- (8) Press button "Calibration STEP2" and the calibration process will start.
Please keep clear above the device with no object covering during the calibration procedure.
As calibration completed, the result screen will be presented.

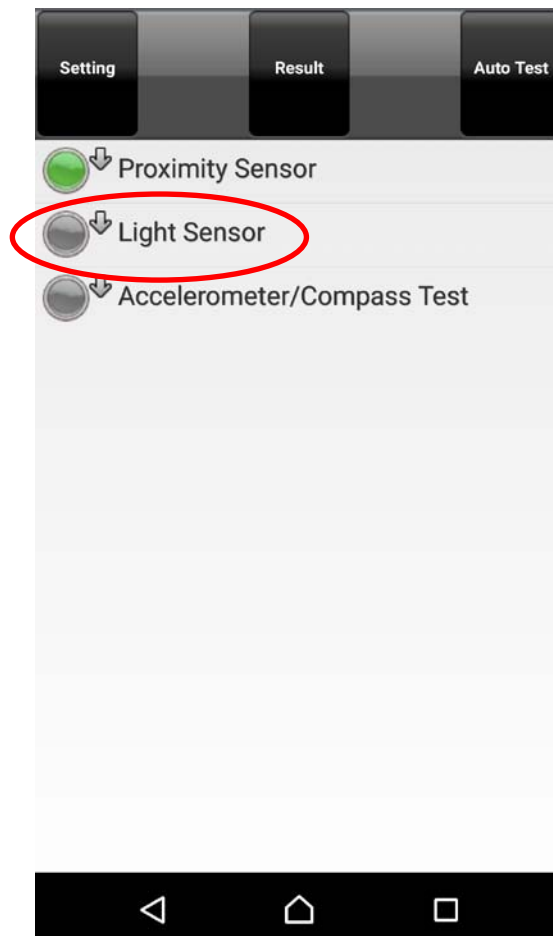
Place phone in Proximity fixture.



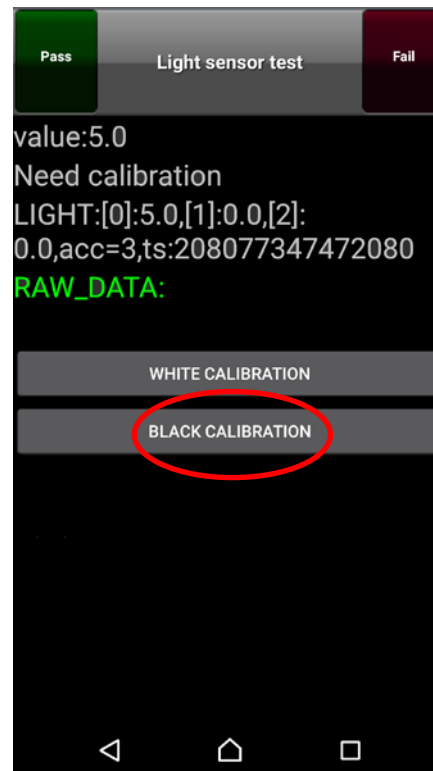
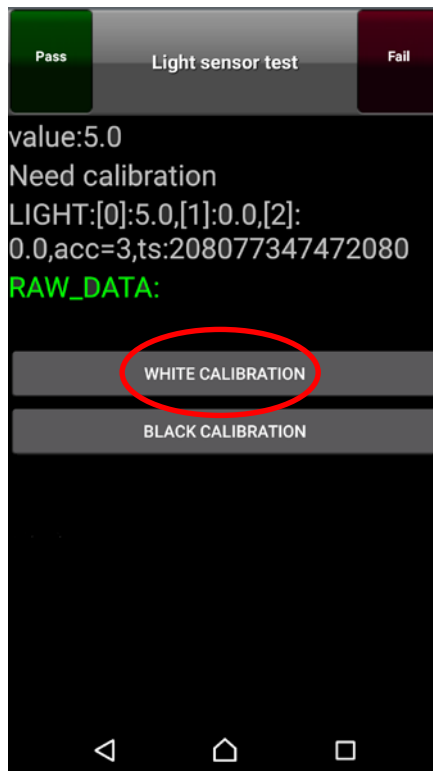
(9) Press button "Test" when unit are inside fixture then move unit outside fixture and the unit will automatically determine pass or fail.

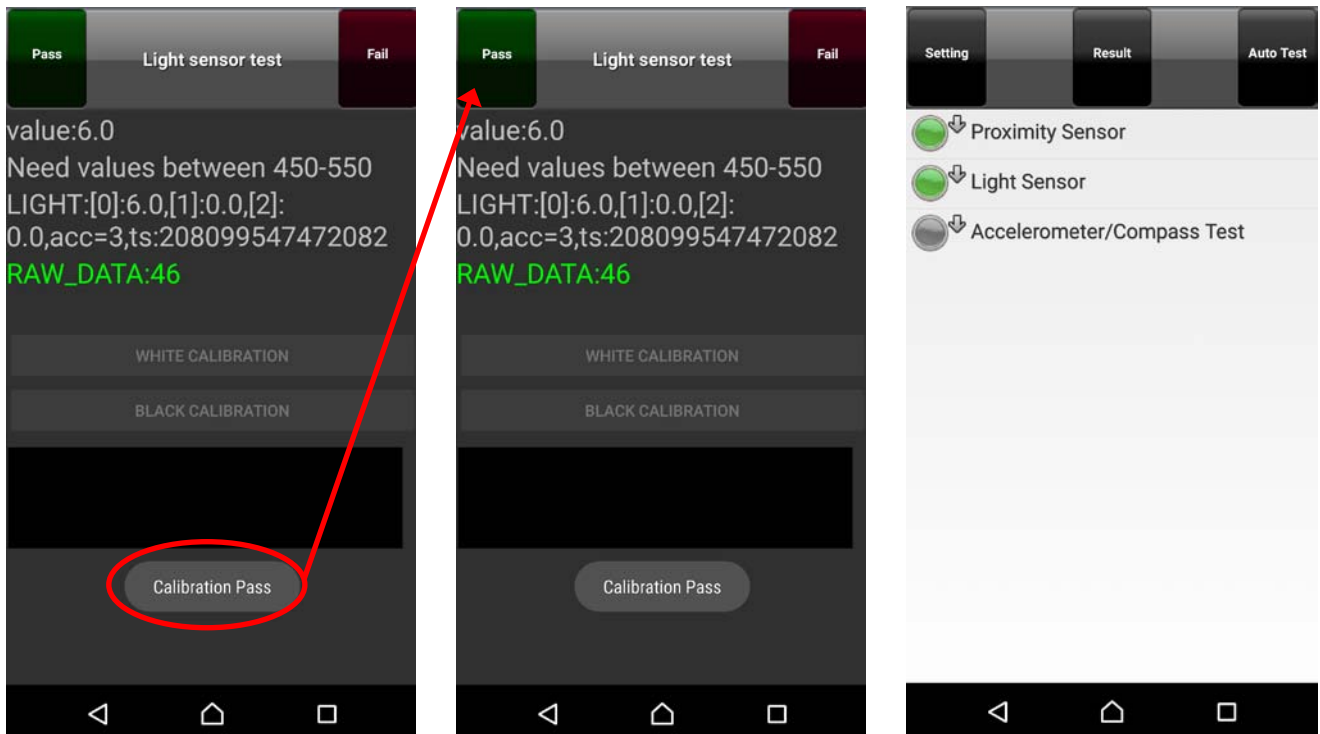
4 Light Sensor

- (1) Select “Light Sensor” item in calibration main menu to enter the main page of Light Sensor calibration.



- (2) Press button "White calibration" to set default value if white unit or
Press button "Black calibration" to set default value if black unit.

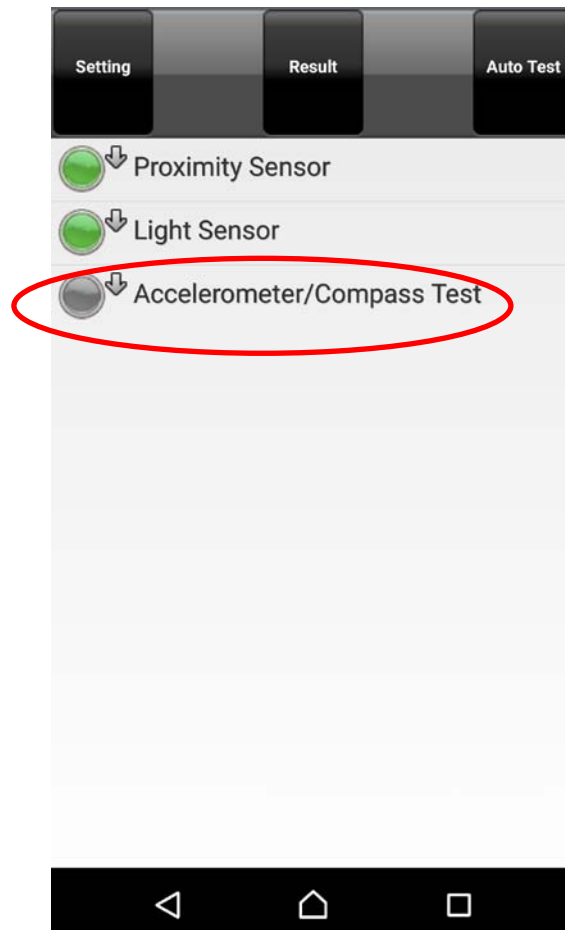




(3) If calibration Pass, then press button "Pass" to enter main calibration menu

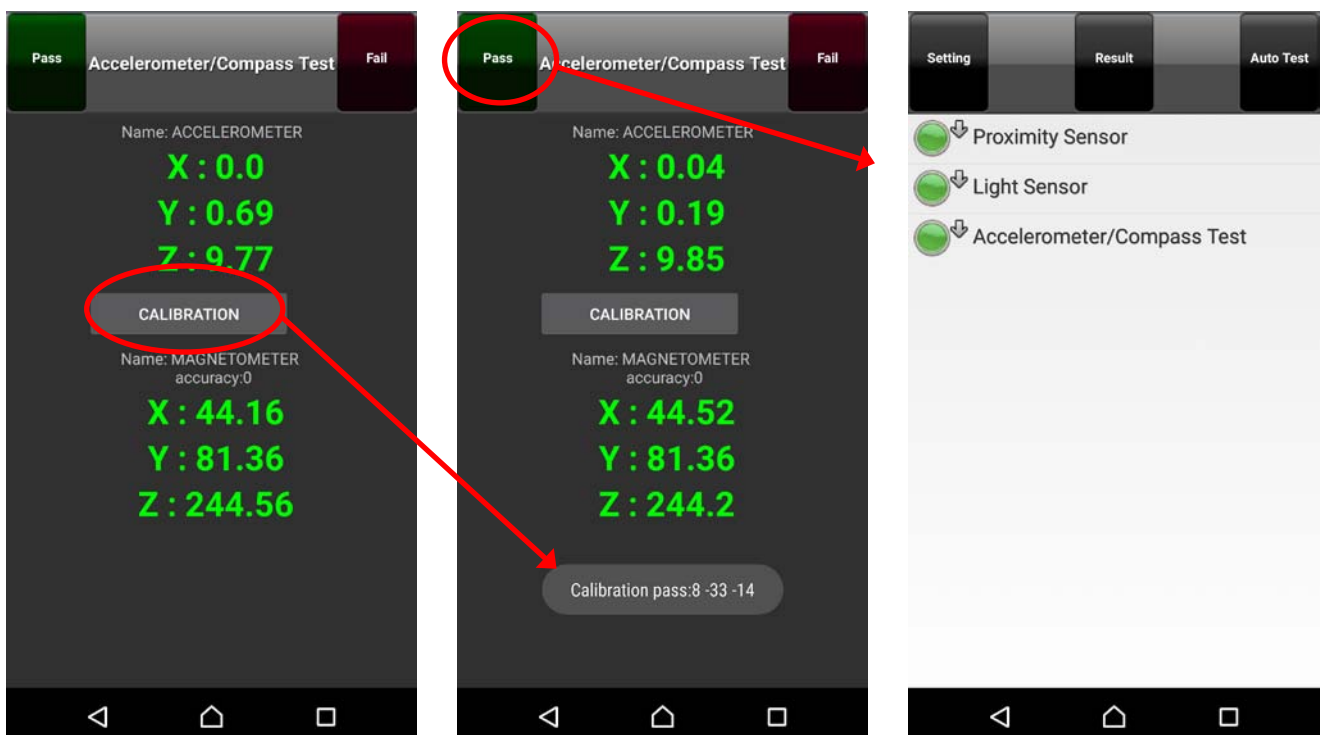
5 Accelerometer

- (1) Select “Accelerometer/Compass Test” item in calibration main menu to enter the main page of Accelerometer/Compass calibration.



(2) Place the device on stable and horizontal flat plane (e.g. table).

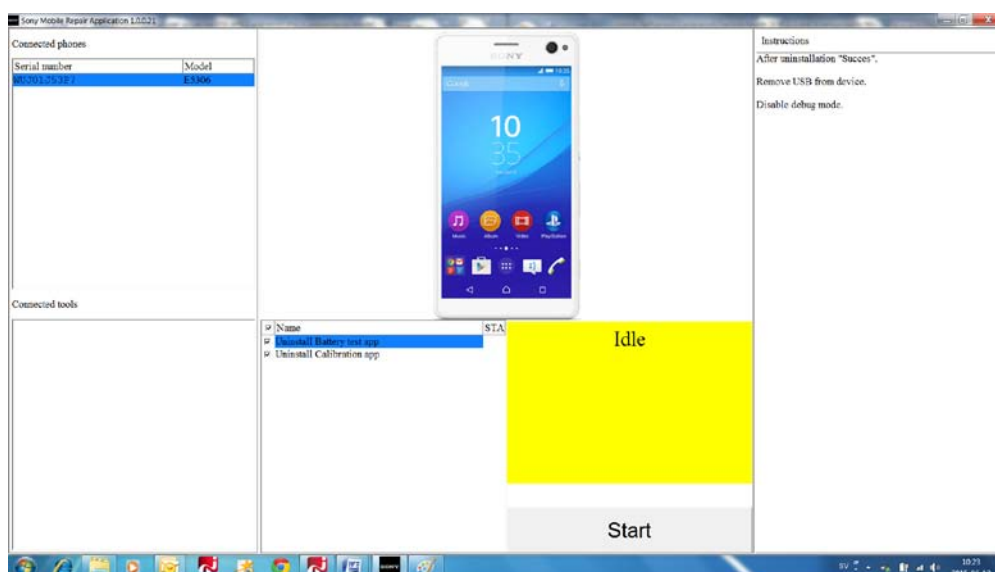
(3) Press button “Calibration” and the calibration process will start.
Please do not move the device during the calibration procedure.



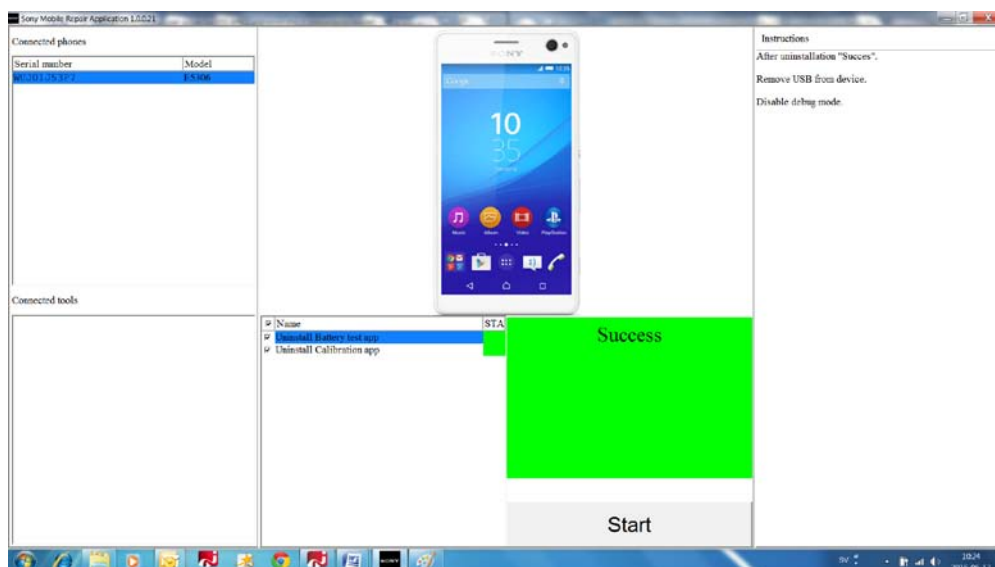
(4) As calibration completed, the result screen will be presented.
If the calibration pass, press button “pass” to enter main menu

6 Uninstall APK

After calibration connect phone to Sony Mobile Repair Application.



Press **Start** to Uninstall Calibration app.
When Success Uninstallation, then remove USB from device.



7 Disable debug mode

Remember to disable debug mode in phone.